

CUSTOM INSTALLATION WITHOUT A MOUNTING PLATE (SEE FIGURE 1)

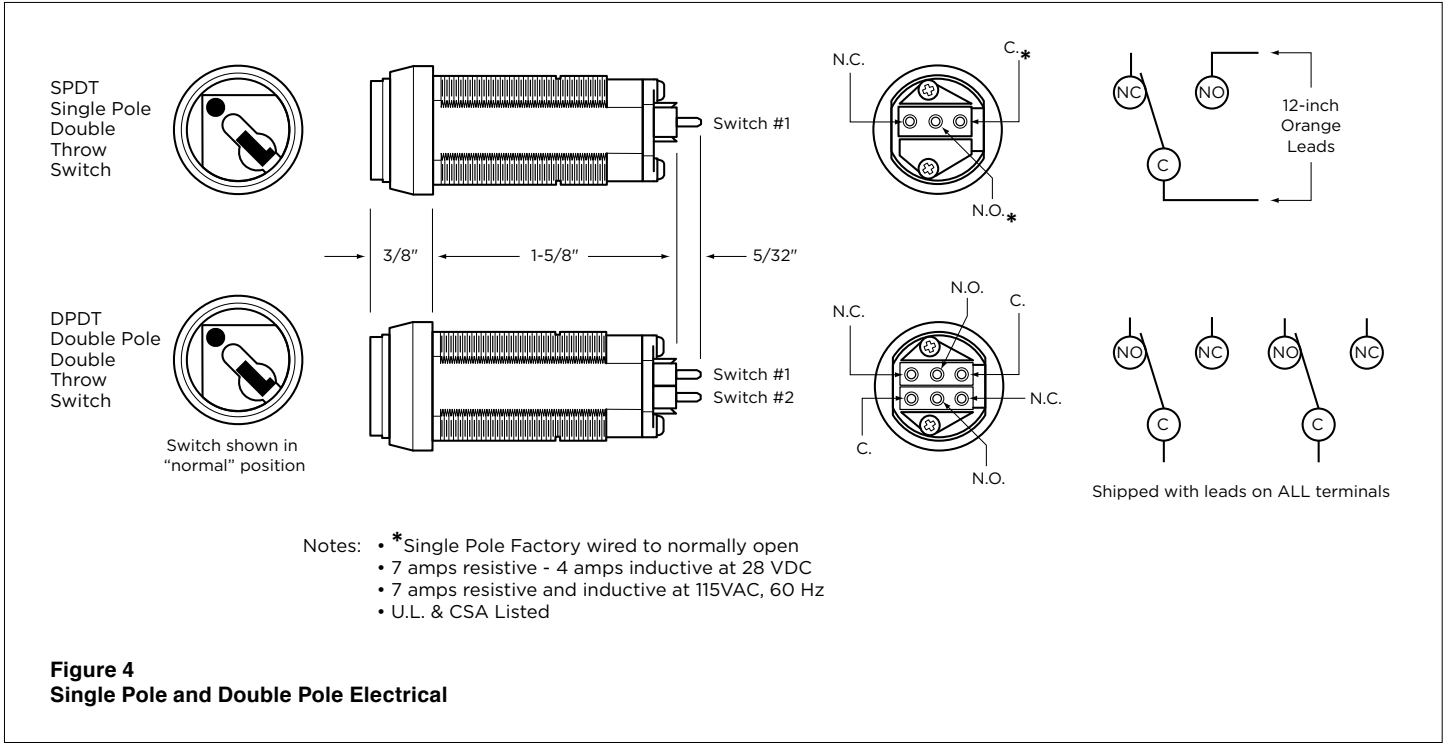
For maximum security, mounting hole MUST be flat on at least one side to prevent Gate and Key Switch from being forcibly rotated when mounting without a mounting plate or cover. Set mounting hole at a 54° angle to properly align face and key opening properly.

SINGLE POLE AND DOUBLE POLE ELECTRICAL

Wire leads 12" in length are factory attached for circuit connection. **Use extreme caution** if other leads must be soldered directly to switch terminals. Over-heating switch terminals will damage switch.

When soldering leads to terminals, use a soldering iron with a 1/8" diameter THERMOSTATICALLY controlled tip of 500° F. **Do not touch iron to terminal for longer than 10 seconds.**

Use a resin core of 60% tin and 40% lead solder. Cleaning terminals by either dipping or brushing is not recommended since excess flux may flow into switch. Excessive iron heat and excessive flux can cause serious damage to switch.



KNOX GATE & KEY SWITCH® MOUNTING INSTRUCTIONS

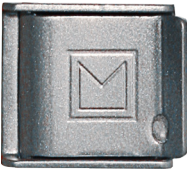
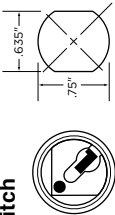


READ INSTRUCTIONS CAREFULLY BEFORE MOUNTING

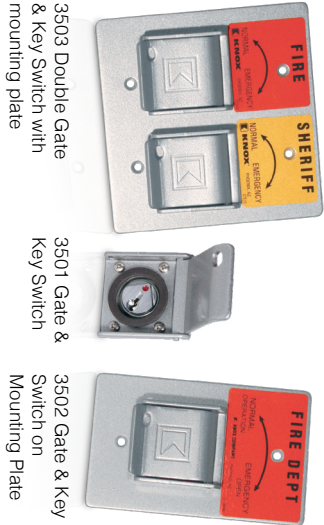
Gate & Key Switch with either standard mounting plate with lock cover, optional stainless steel lock cover, **or in a** custom installation.

Figure 1 - Gate and Key Switch Orientation and Mounting Hole Specifications

Never force Gate and Key Switch into an undersized hole.



The Knox Gate & Key Switch features a stainless steel lock cover that makes the key switch very resistant to inclement weather, dirt from high traffic areas, and vandalism.



WARNING:
Injury may occur if Gate & Key Switch is installed near pathway of motorized door or gate.

WARNING:
Injury may occur if Gate & Key Switch is installed near pathway of motorized door or gate.



KNOX GATE & KEY SWITCH® MOUNTING INSTRUCTIONS

KNOX GATE & KEY SWITCH[®]

MOUNTING INSTRUCTIONS

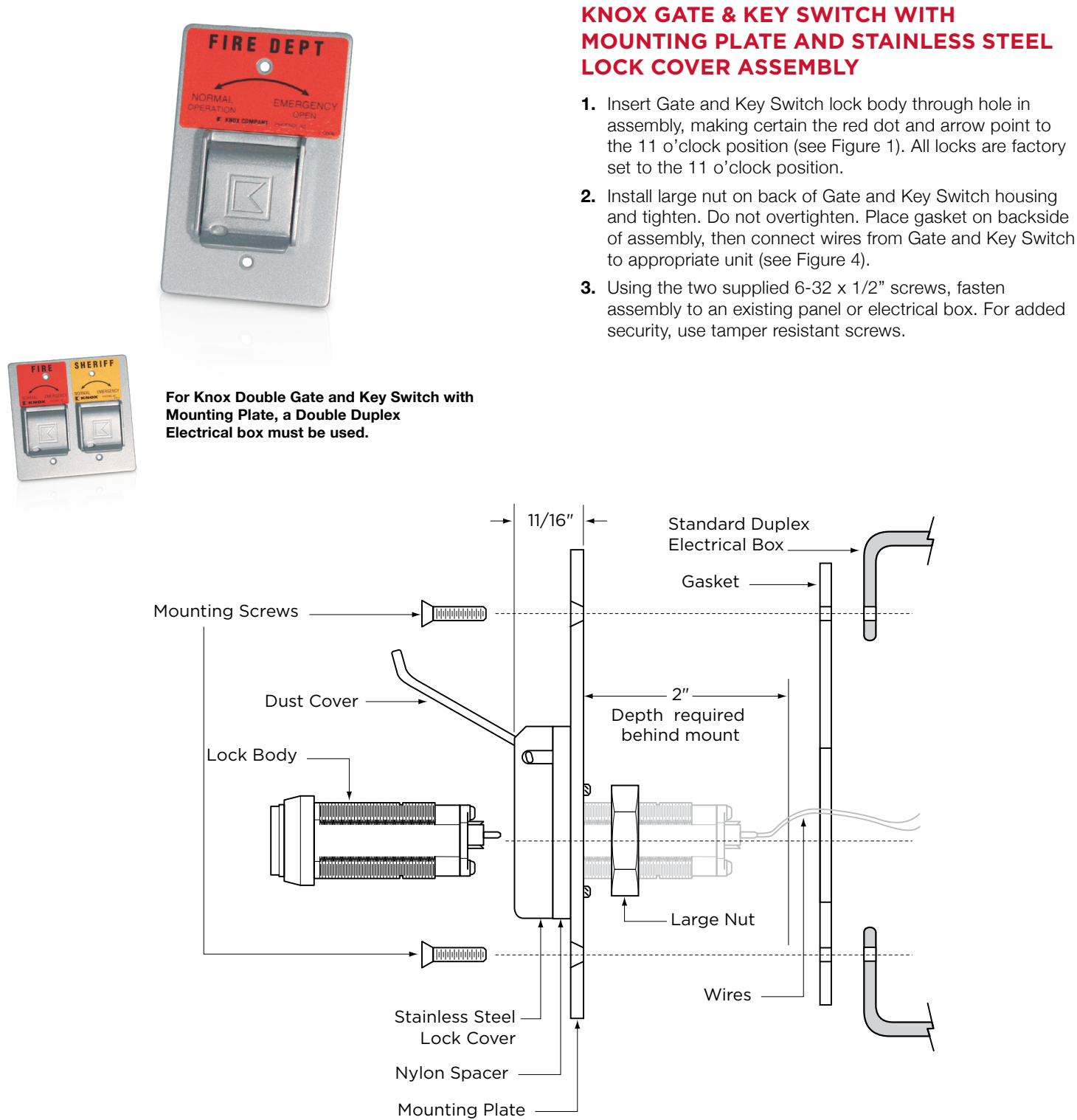


Figure 2 - Mounting Plate with single Lock Cover Assembly

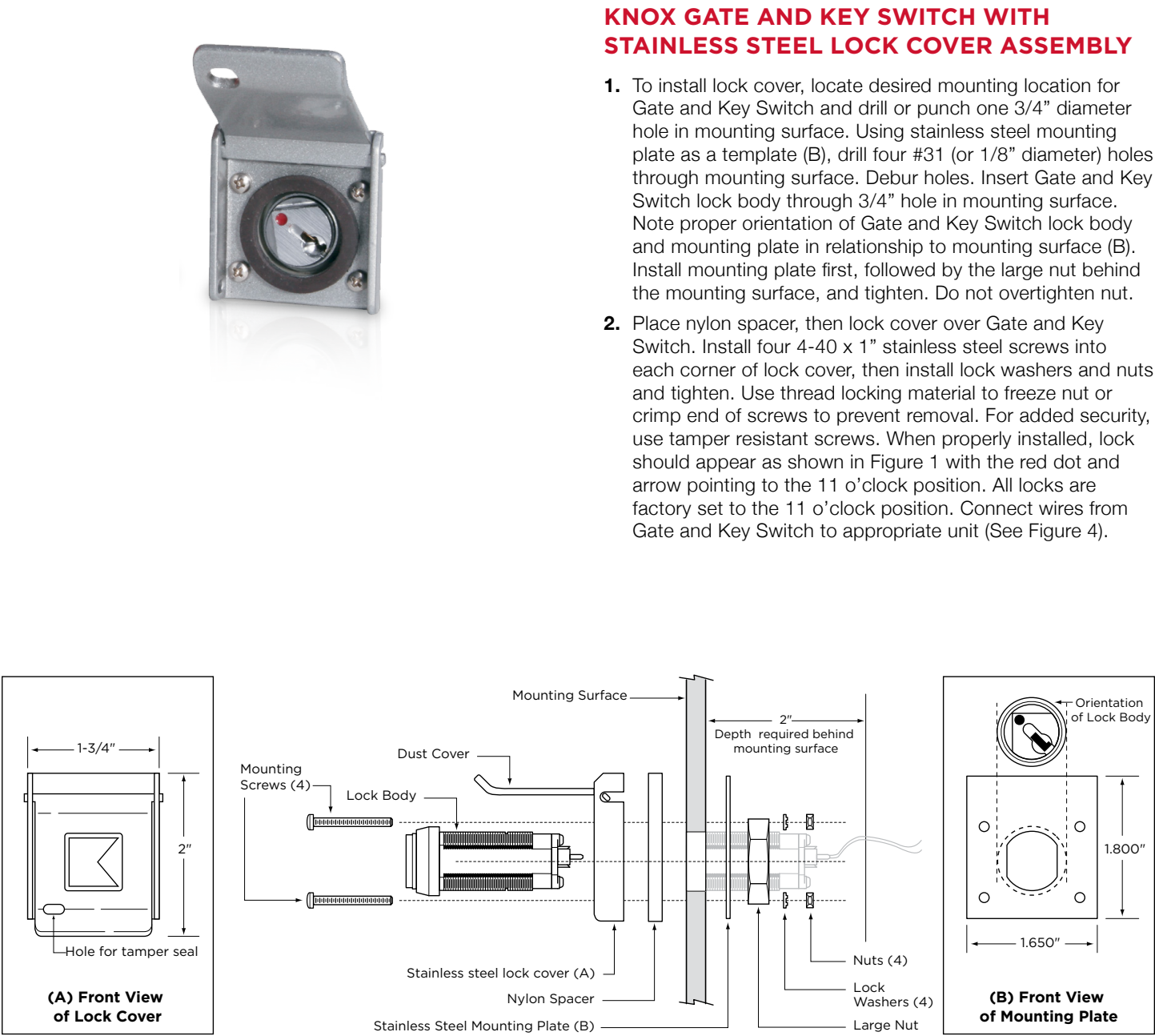


Figure 3 - Key Switch with Stainless Steel Lock Cover Assembly